

## Togo Murano (1891-1984)



1931+1956  
Morigo Building  
4-1-21 Nihonbashi, Chuo-ku, Tokyo



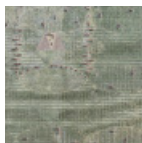
1936+1960+1988  
Miyako Hotel Kyoto  
Sanjo-keage, Higashiyama-ku, Kyoto



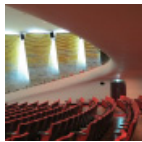
1953  
Fujikawa Art Gallery  
1-7-3 Kawaramachi, Chuo-ku, Osaka



1954  
World Peace Memorial Cathedral  
4-42 Nobori-cho, Naka-ku, Hiroshima



1955  
Doton Restaurant Building  
1-6-15 Dotonbori, Chuo-ku, Osaka



1957  
Yomiuri Hall and Sogo Department Store  
1-11-1 Yurakucho, Chiyoda-ku, Tokyo



1958  
New Kabuki Theater  
4-3-25 Nanba, Chuo-ku, Osaka



1959  
Kansai University, Round Library  
3-3-35 Yamate-cho, Suita-shi, Osaka



1959  
Kasuien Annex, Miyako Hotel Kyoto  
Sanjo-keage, Higashiyama-ku, Kyoto



1960  
Textile Exporters House  
3-4-9 Bingomachi, Chuo-ku, Osaka



1960  
Kansai University, Lecture Theater  
3-3-35 Yamate-cho, Suita-shi, Osaka



1962  
Morita Building  
2-4-6 Bingomachi, Chuo-ku, Osaka



1963  
Kansai University, Gymnasium  
3-3-35 Yamate-cho, Suita-shi, Osaka



1963  
Ventilation Towers  
Umeda, Kita-ku, Osaka



1963  
Nissei Hibiya Building and Nissei Theater  
1-1-1 Yuraku-cho, Chiyoda-ku, Tokyo



1964  
Kansai University, Specialists' Library  
3-3-35 Yamate-cho, Suita-shi, Osaka



1964  
Naniwa-gumi Osaka Office  
2-3-27 Higashi-Shinsaibashi, Chuo-ku, Osaka



1966  
Chiyoda Life Insurance Company  
2-19-15 Kami-meguro, Meguro-ku, Tokyo



1967  
Kiyohara Tokyo Branch  
3-2-11 Higashikanda, Chiyoda-ku, Tokyo



1969  
Japan Lutheran College  
3-10-20 Osawa, Mitaka, Tokyo



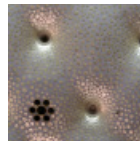
1969  
Office Building  
16 Ishigatsujicho, Tennoji-ku, Osaka



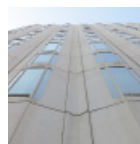
1970  
Office Building  
5-9-3 Nishitenma, Kita-ku, Osaka



1974  
Industrial Bank of Japan  
1-3-3 Marunouchi, Chiyoda-ku, Tokyo



1982  
Grand Prince Hotel New Takanawa  
3-13-1 Takanawa, Minato-ku, Tokyo



1985  
Miyako Hotel Osaka  
6-1-55 Uehon-machi, Tennoji-ku, Osaka



1986  
Kyoto Takaragaike Prince Hotel  
Takaragaike, Sakyo-ku, Kyoto